



RADI-CEM 01

PERSONAL PROTECTION EQUIPMENT

FREQUENCY RANGE 40 Hz - 10 kHz

The RADI-CEM is a selective PPE (Personal Protection Equipment) that measures the magnetic field strength to which the operator is subjected.

The RADI-CEM is extremely lightweight and compact so easy to use for the operator.

Suitable for any work environment, it allows setting the alarm level and type (vibration, sound, LED), the automatic identification of the frequency and the battery replacement directly on the field, together with the data downloading via USB.



PERSONAL MONITOR

The use of RADI-CEM allows the operator to monitor the emissions to which he is subjected in the workplace. Different types of alarm with selectable level, customizable by the operator. Lightweight and easily wearable, it does not affect the operator's work.



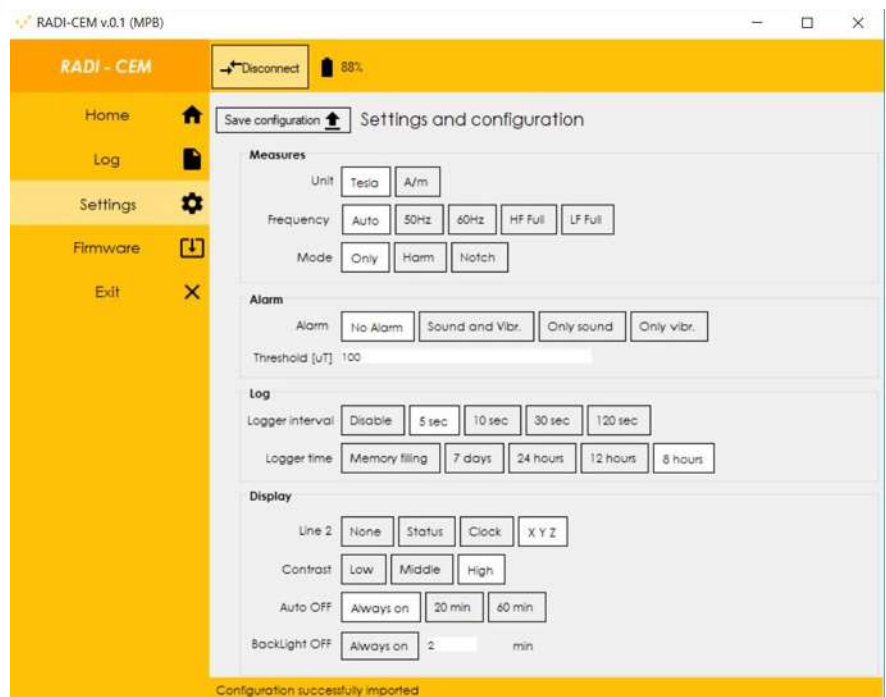
Measurement:

- alarm threshold adjustable from 10uT to 19mT
- alarm type : acoustic, vibration, and visual
- data and time storing
- isotropic measure and frequency selective or broadband

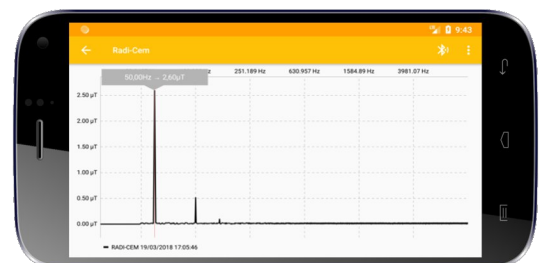
Easy to connect to the PC to download measurement data during the session

Software:

- Windows
- USB Connection
- Parameter setting
- download data stored
- firmware upload



The option for bluetooth connection to PC / tablet / smartphone is available for displaying the measurement spectrum.



SELECTIVE MAGNETIC TRIAXIAL METER

By setting the alarm threshold level in TEST mode, the device switches from Personal Monitor mode to Meter mode and activates the auto range algorithm, to make use of 96 dB of dynamics.

Measurement:

The METER can select the frequency:

- AUTO: auto detects the frequency of the maximum recognized level
- 50 or 60Hz: measures the 50 or 60Hz contribution of the magnetic field

The meter can evaluate:

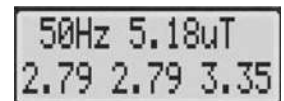
- Only: evaluates the level of only the selected frequency
- Harm: evaluates the level at the selected frequency and the harmonics levels
- Notch: evaluates the level of the harmonics of the selected frequency

Store data:

The METER can read and store the isotropic value every 5; 10; 30; 120 seconds; it can store data up to 7 days

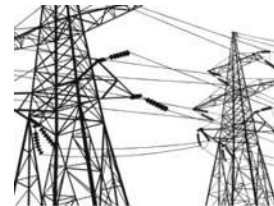
Display:

Data is shown on the LCD display: it can show frequency, isotropic measure and X;Y; Z



Some use:

- emissions of electric motors
- emissions of electric ovens
- emissions of power lines



Data:

- CSV format
- Frequency of max level
- Iso : isotropic value
- X; Y; Z; level values
- unit: uT; mT; A/m ;kA/m

J23 f_x

	A	B	C	D	E	F	G	H	I
1	date	time	mode	frequency iso	x	y	z		unit
2	01/01/2018	15:42:50	0	31	5.18	3.35	2.79		2.79 uT
3	01/01/2018	15:43:00	0	30	4.9	3.35	2.23		2.79 uT
4	01/01/2018	15:43:10	0	60	4.9	2.23	2.79		3.35 uT
5	01/01/2018	15:43:20	0	30	5.18	2.79	2.79		3.35 uT
6	01/01/2018	15:43:30	0	31	5.86	3.35	2.79		3.91 uT
7	01/01/2018	15:43:50	0	40	5.18	3.35	2.79		2.79 uT
8	01/01/2018	15:44:00	0	41	5.18	2.79	2.79		3.35 uT
9	01/01/2018	15:44:10	0	40	5.18	2.79	3.35		2.79 uT
10	01/01/2018	15:44:20	0	60	5.86	3.35	2.79		3.91 uT

TECHNICAL SPECIFICATIONS

Measurement Type	Selective
Sensor Type	3-axis winding
Frequency Range 3 dB 1 dB 3 dB	@ Full Band (10 uT) 40 Hz...48 Hz 48 Hz...2 kHz 2 kHz...10 kHz
Level Range Resolution Overload Dynamic	300 nT ... 20 mT 10 nT 22 mT 96 dB
Measure Error Linearity Absolute Error	@ 48 ... 500 Hz - 1 uT ... 10 mT 1.2 dB 1.6 dB
Unit of measure	auto range: uT; mT; A/m; kA/m
Measures user defined	Auto identification of the frequency with and without harmonics Selective at 50 Hz or 60 Hz; 50Hz or 60 Hz plus harmonics; the only harmonics of 50 Hz or 60 Hz; Broadband in the 40 Hz ... 400 Hz LB range Broadband in the 400 Hz ...10 kHz HB range
Data logger Recording Time Interval	8h ; 12h; 24h; 7 days; memory filling (until memory filling) 5...10..30..120 sec
Display	LCD 2 lines x 16 characters backlight
Configuration	from administrator
Multifunctions LED	Green LED – measure in progress Blue LED - storing in progress Red LED – alarm threshold exceeded
I/O Interface	USB
Alarm	Type - Acoustic (selectable) - Vibration (selectable) - Red LED (default)
Sleep	20 min; 60 min; disable
Date and time	settable by the operator
Reference Standards	Directive 2013/35/EU
Operating temperature	-10° ... 40° C
Calibration certificate	standard; LAT
Dimensions	118 x 79 x 25 mm
Weight	125 g
Options	protective bag; tripod support; harness;

Subject to change without notice